

North West NDTMS Monthly Report

MAY 2007

Contents

| | |
|---|---|
| Introduction | 1 |
| Triage and discharge information for March 2006 | 2 |
| Number in treatment by D(A)AT | 3 |
| Age of individuals in contact with treatment services | 4 |
| Gender and Ethnicity | 5 |
| Referral Sources | 6 |
| Discharge Reasons | 7 |
| Successful completion | 8 |
| Primary drug of use | 9 |

Claire Shaw
Ayesha Khundakar
Adam Marr
Jim McVeigh

Centre for Public Health,
Faculty of Health and Applied Social Sciences,
Liverpool John Moores University,
Castle House,
North Street,
Liverpool.
L3 2AY

Introduction

This publication is first of the 2007/08 series of monthly reports produced by the Centre for Public Health detailing the results of the National Drug Treatment Monitoring System (NDTMS) in the North West of England. The report aims to provide each of the 22 North West Drug (and Alcohol) Action Teams (D(A)ATs) with timely information on the number, and profile, of those in contact with treatment services in the area. In order to provide D(A)ATs with timely information, the monthly reports detail year-to-date figures for the number of people in contact with treatment services up to, and inclusive of, the previous month. Therefore, this monthly report details year to date information from 1st April 2007 up to 30th April 2007. The report gives D(A)ATs the ability to monitor the main routes of referral for those in contact with services, whilst also providing information on the discharge reasons for those leaving treatment services. The report gives information on all D(A)ATs in the region to offer individual D(A)ATs the ability to track their own performance in relation to other areas within the North West.

The total number of clients in each D(A)AT quoted in this report may differ slightly to the Local Delivery Plan (LDP) figures produced nationally by National Drug Evidence Centre (NDEC) and NTA. This is due to methodological differences between North West NDTMS (CPH, Liverpool John Moores University) and NDEC. NDEC figures include North West residents who were in contact with services outside of the region. Additionally, where a client does not have a D(A)AT of residence, NDEC use a method of interpolation, calculating the proportion of people resident in D(A)AT areas found in complete records and applying this to missing data. The Centre for Public Health does not use this method and reports on only those clients for whom the relevant data have been provided. The Centre for Public Health, Liverpool John Moores University, uses the last day of the reporting month to calculate the age of those in contact with treatment services. This is in contrast to the method of age calculation used by NDEC.

The Centre for Public Health, Liverpool John Moores University welcomes feedback on the content of the report to help with future reporting methods. Feedback on the method of report dissemination would also be appreciated. Developments in future monthly reporting will occur following this consultation period.

In addition to NDTMS monthly reports, the North West NDTMS, based at the Centre for Public Health, Liverpool John Moores University, produce additional outputs based on NDTMS information. Additional outputs include annual and thematic reports, which focus in detail on particular aspects of the NDTMS dataset. These can be found at <http://www.cph.org.uk/publications.asp>

Triage and Discharge Information for April 2007

The following section details the number of individuals who were triaged during April 2007. This information has been taken from individuals' latest treatment episode. An individual may have been in service during the year prior to their treatment episode in this particular month and is therefore not an indication of the number of new clients for the year. A person may be counted more than once if they were resident in more than one D(A)AT area during the reporting month. The section also details the number of discharges that occurred during April 2007, along with the discharge reasons for individuals leaving treatment services.

Table One: Number of triages and discharges during April 2007 by D(A)AT of residence

| D(A)AT | No. Triaged in April 2007 | No. successful completions April 2007 | No. unplanned discharges April 2007 | No. discharges reason 'not known' April 2007 | No. discharges reason 'other' April 2007 |
|-----------------------|---------------------------|---------------------------------------|-------------------------------------|--|--|
| Blackburn with Darwen | 23 | 14 | 27 | 0 | 0 |
| Blackpool | 63 | 23 | 36 | 0 | 7 |
| Bolton | 69 | 22 | 43 | 0 | - |
| Bury | 39 | 9 | 6 | 0 | - |
| Cheshire | 56 | 7 | 14 | 0 | - |
| Cumbria | 16 | 11 | 9 | 11 | 0 |
| Halton | 23 | 52 | 6 | 0 | 10 |
| Knowsley | 9 | - | 0 | 0 | 0 |
| Lancashire | 179 | 127 | 68 | 0 | - |
| Liverpool | 86 | 29 | 37 | - | - |
| Manchester | 98 | 21 | 40 | 0 | 5 |
| Oldham | 24 | 10 | 6 | 0 | 0 |
| Rochdale | 60 | 16 | 12 | 0 | - |
| Salford | 32 | 13 | 30 | 0 | 0 |
| Sefton | 31 | 23 | 9 | 0 | 0 |
| St Helens | 10 | 6 | 8 | 0 | 0 |
| Stockport | 30 | 13 | - | 0 | 0 |
| Tameside | 29 | - | 19 | - | 0 |
| Trafford | 34 | 17 | 7 | 0 | 0 |
| Warrington | 27 | - | 8 | 0 | 0 |
| Wigan and Leigh | 80 | 6 | 25 | 0 | 0 |
| Wirral | 49 | 7 | 10 | 0 | 0 |

- = Numbers less than 5 have been suppressed to protect the confidentiality of individuals

Discharge Reasons

In this report, the discharge reason data has been collapsed into four categories. These categories are Successful Completion, which incorporates 'treatment completed', 'treatment completed drug free' and 'referred on'; Unplanned Discharge which includes 'treatment withdrawn/breached', 'no appropriate treatment', 'dropped out/left', 'prison', 'moved away', 'died', 'treatment declined by client' and 'inappropriate referral'. The other two categories are Other and Not Known. The Not Known category includes episode data that included a discharge date but no discharge reason.

Number of individuals in contact with treatment services by D(A)AT

Table Two details the year-to-date figure for the number of individuals in contact with treatment services by D(A)AT of residence. These figures detail all individuals in contact with treatment agencies from 1st April 2007 to 30th April 2007. The table only includes data for those resident within the region who were in contact with treatment services within the North West. The figures also only include those individuals in contact with structured treatment services (i.e. high threshold tier 3 and 4 services as defined by the Models of Care, National Treatment Agency (NTA), 2002, see www.nta.nhs.uk). Low threshold interventions, such as open access and syringe exchange services are not recorded within the NDTMS. The system excludes those who presented to service with alcohol as their primary problematic substance. A person may be counted more than once if they were resident in more than one D(A)AT area during the reporting period.

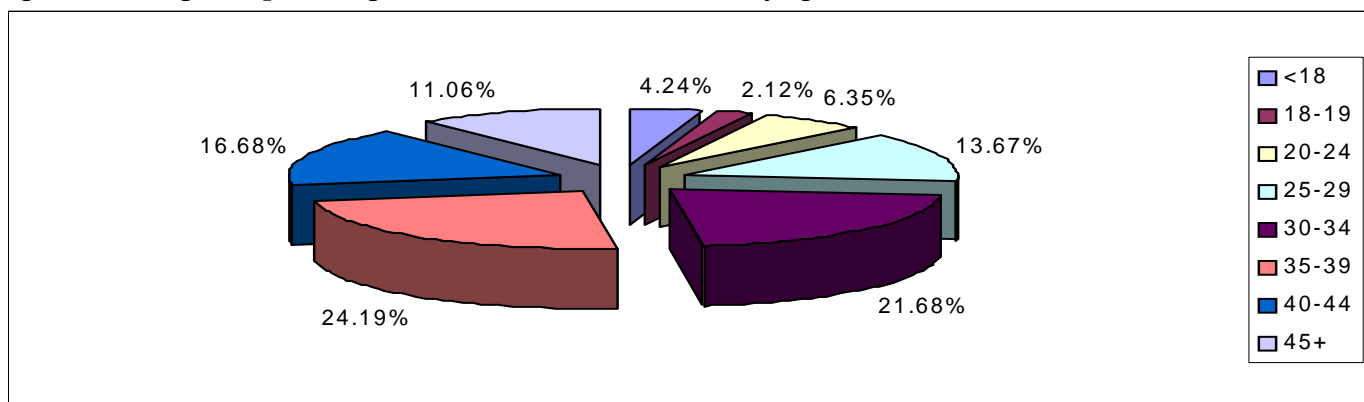
Table Two: Number of individuals in contact with treatment services (From 01/04/2007 to 30/04/2007) by D(A)AT of residence

| D(A)AT | Number in treatment YTD |
|-----------------------|--------------------------------|
| Blackburn with Darwen | 734 |
| Blackpool | 1085 |
| Bolton | 1298 |
| Bury | 683 |
| Cheshire | 1749 |
| Cumbria | 1220 |
| Halton | 748 |
| Knowsley | 898 |
| Lancashire | 3574 |
| Liverpool | 2871 |
| Manchester | 2992 |
| Oldham | 804 |
| Rochdale | 1227 |
| Salford | 836 |
| Sefton | 1077 |
| St Helens | 801 |
| Stockport | 666 |
| Tameside | 797 |
| Trafford | 515 |
| Warrington | 765 |
| Wigan and Leigh | 1192 |
| Wirral | 2364 |

Age

The following section details the age profile of those in contact with treatment services in the North West of England. The age of individuals has been calculated from the last day of the reporting month (30/04/2007).

Figure One: Regional percentages of individuals in treatment by age bands



Whilst regionally 4.24% of individuals in contact with treatment services were aged under 18, the proportion of clients in this age band varied considerably across D(A)ATs (see Table Three). In Sefton and Tameside, 1.67% and 1.76% of the treatment population respectively were aged under 18. In contrast, 11.82% and 11.27% of those in contact with treatment services in Rochdale and Bury respectively were aged under 18. In Blackburn with Darwen, 15.53% of those in contact with service were aged 40 and over, whereas in Liverpool and Wirral this age group comprised 39.43% and 40.27% respectively of the treatment population.

Table Three: Age of individuals in contact with treatment services by D(A)AT of residence

| D(A)AT | Age bands | | | | | | | |
|-----------------------|-----------|-------|-------|-------|-------|-------|-------|-----|
| | <18 | 18-19 | 20-24 | 25-29 | 30-34 | 35-39 | 40-44 | 45+ |
| Blackburn with Darwen | 47 | 11 | 56 | 101 | 219 | 186 | 62 | 52 |
| Blackpool | 25 | 16 | 70 | 174 | 248 | 279 | 158 | 115 |
| Bolton | 47 | 34 | 111 | 257 | 360 | 272 | 140 | 77 |
| Bury | 77 | 43 | 40 | 109 | 118 | 136 | 90 | 70 |
| Cheshire | 66 | 37 | 143 | 286 | 414 | 345 | 283 | 175 |
| Cumbria | 22 | 20 | 110 | 285 | 332 | 207 | 137 | 107 |
| Halton | 27 | 12 | 76 | 123 | 168 | 156 | 99 | 87 |
| Knowsley | 77 | 12 | 57 | 107 | 168 | 242 | 164 | 71 |
| Lancashire | 187 | 76 | 226 | 611 | 927 | 769 | 429 | 349 |
| Liverpool | 97 | 35 | 88 | 219 | 460 | 840 | 700 | 432 |
| Manchester | 55 | 37 | 127 | 323 | 630 | 833 | 585 | 402 |
| Oldham | 21 | 17 | 62 | 93 | 185 | 211 | 120 | 95 |
| Rochdale | 145 | 44 | 90 | 144 | 203 | 278 | 175 | 148 |
| Salford | 27 | 11 | 41 | 106 | 211 | 214 | 140 | 86 |
| Sefton | 18 | 9 | 52 | 82 | 188 | 347 | 247 | 134 |
| St Helens | 28 | 19 | 78 | 116 | 198 | 168 | 110 | 84 |
| Stockport | 32 | 14 | 45 | 92 | 162 | 145 | 95 | 81 |
| Tameside | 14 | 14 | 67 | 152 | 214 | 179 | 92 | 65 |
| Trafford | 24 | 11 | 29 | 56 | 75 | 131 | 123 | 66 |
| Warrington | 39 | 18 | 62 | 113 | 191 | 181 | 94 | 67 |
| Wigan and Leigh | 67 | 51 | 97 | 233 | 273 | 251 | 154 | 66 |
| Wirral | 58 | 63 | 116 | 178 | 337 | 660 | 617 | 335 |

Gender and Ethnicity of individuals in contact with treatment services

During 2007/08 (YTD), 70.63% of individuals in contact with treatment services in the North West were male. Regionally, there were proportionately more females in contact with treatment services aged 20-29 in comparison to other age groups. Whilst regionally, 95.96% of those individuals stating their ethnicity were described as 'white', there was a degree of variation in this percentage from 88.14% in Oldham to 99.72% in Blackpool. It should be noted that ethnicity percentages were calculated from those that stated an ethnicity and did not include missing data.

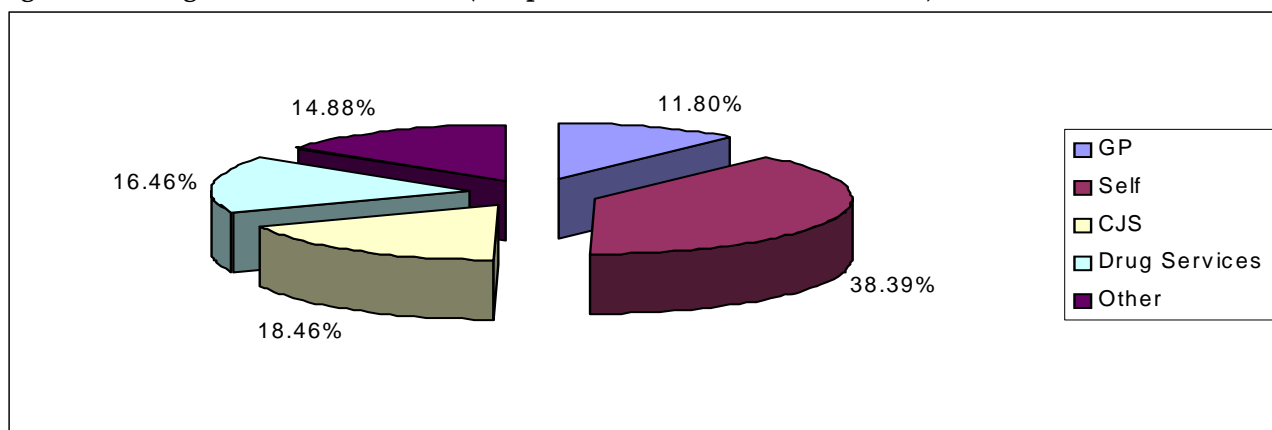
Table Four: Gender and Ethnicity by D(A)AT of residence

| D(A)AT | Male | | White | |
|-----------------------|------|-------|-------|-------|
| | No. | % | No. | % |
| Blackburn with Darwen | 569 | 77.52 | 616 | 95.36 |
| Blackpool | 730 | 67.28 | 1082 | 99.72 |
| Bolton | 927 | 71.42 | 1231 | 95.13 |
| Bury | 496 | 72.62 | 636 | 93.39 |
| Cheshire | 1253 | 71.64 | 1673 | 98.70 |
| Cumbria | 799 | 65.49 | 1156 | 97.88 |
| Halton | 517 | 69.12 | 741 | 99.20 |
| Knowsley | 652 | 72.61 | 872 | 98.42 |
| Lancashire | 2397 | 67.07 | 3314 | 96.73 |
| Liverpool | 1958 | 68.20 | 2702 | 96.53 |
| Manchester | 2115 | 70.69 | 2584 | 88.16 |
| Oldham | 584 | 72.64 | 706 | 88.14 |
| Rochdale | 864 | 70.42 | 1140 | 93.98 |
| Salford | 614 | 73.44 | 785 | 94.58 |
| Sefton | 759 | 70.47 | 1062 | 98.79 |
| St Helens | 601 | 75.03 | 797 | 99.50 |
| Stockport | 480 | 72.07 | 627 | 95.43 |
| Tameside | 569 | 71.39 | 747 | 96.76 |
| Trafford | 375 | 72.82 | 454 | 89.37 |
| Warrington | 579 | 75.69 | 758 | 99.08 |
| Wigan and Leigh | 875 | 73.41 | 1179 | 98.91 |
| Wirral | 1716 | 72.59 | 2341 | 99.28 |

Referral sources of individuals in contact with treatment in the North West

In this section of the report, all episodes of treatment in 2007/08 have been recorded, regardless of whether an individual has entered treatment on more than one occasion over the year (n=33150 including double counting). All episodes of treatment have been included to provide the fullest possible understanding of the ways in which people are referred into services in each D(A)AT area. Regionally, the most common route of referral into treatment services was through self-referral (38.39%).

Figure Two: Regional route of referral (all episodes of treatment for the YTD)



See page 11 for list of 'Other' routes of referral

Whilst regionally, 18.46% of referrals were from Criminal Justice Services, this proportion varied between D(A)ATs from 9.04% in Knowsley to 35.32% in Blackburn with Darwen.

Table Five: Referral Sources for all episodes of treatment by D(A)AT of residence

| D(A)AT | GP | Self | CJS | Drug services | Other |
|-----------------------|------|------|-----|---------------|-------|
| Blackburn with Darwen | 75 | 312 | 279 | 33 | 91 |
| Blackpool | 27 | 260 | 305 | 628 | 91 |
| Bolton | 100 | 666 | 378 | 154 | 127 |
| Bury | 86 | 204 | 198 | 109 | 111 |
| Cheshire | 222 | 1029 | 251 | 159 | 171 |
| Cumbria | 482 | 333 | 288 | 147 | 203 |
| Halton | 92 | 379 | 107 | 245 | 159 |
| Knowsley | 64 | 392 | 96 | 187 | 323 |
| Lancashire | 369 | 1833 | 916 | 453 | 580 |
| Liverpool | 1051 | 614 | 405 | 681 | 455 |
| Manchester | 172 | 1299 | 603 | 638 | 772 |
| Oldham | 75 | 488 | 132 | 66 | 53 |
| Rochdale | 124 | 605 | 224 | 195 | 284 |
| Salford | 45 | 450 | 171 | 143 | 106 |
| Sefton | 121 | 303 | 210 | 506 | 106 |
| St Helens | 81 | 423 | 140 | 85 | 127 |
| Stockport | 41 | 379 | 121 | 83 | 83 |
| Tameside | 79 | 404 | 166 | 52 | 92 |
| Trafford | 41 | 170 | 137 | 82 | 64 |
| Warrington | 67 | 437 | 92 | 213 | 99 |
| Wigan and Leigh | 41 | 762 | 317 | 106 | 85 |
| Wirral | 380 | 737 | 465 | 386 | 654 |

Discharge reasons for individuals in contact with treatment services

The following section details the discharge reasons for individuals exiting structured drug treatment during 2007/08 (YTD). In this section, only data from a client's latest episode were used. The NDTMS has 12 outcome measures. In Figure Three and Table Six, the data has been collapsed into five categories. These categories are Successful Completion, Unplanned Discharge, Ongoing, which includes all clients in contact with service on 30th April 2007, Other and Not Known. Where agencies did not complete a discharge date a client was assumed to be still in contact and in an ongoing episode. Regionally, the majority of clients in contact with treatment services during 2007/08 (YTD) were in an ongoing treatment episode (96.88%).

The carry over from 2006/07 figure on Table Six details the number and percentage of clients carried from the 2006/07 data into the 2007/08 data. Clients carried into 2007/08 data were in an open episode on 31/03/2007.

Table Six: Client status for latest episode of treatment by D(A)AT of residence

| D(A)AT | Carry over from 06/07 | | Ongoing | | Successful completion | | Unplanned discharge | | Not known | | Other | |
|-----------------------|-----------------------|------|---------|------|-----------------------|-----|---------------------|-----|-----------|-----|-------|-----|
| | Count | % | Count | % | Count | % | Count | % | Count | % | Count | % |
| Blackburn with Darwen | 675 | 92.0 | 693 | 94.4 | 14 | 1.9 | 27 | 3.7 | 0 | 0.0 | 0 | 0.0 |
| Blackpool | 960 | 88.5 | 1019 | 93.9 | 23 | 2.1 | 36 | 3.3 | 0 | 0.0 | 7 | 0.6 |
| Bolton | 1168 | 90.0 | 1230 | 94.8 | 22 | 1.7 | 43 | 3.3 | 0 | 0.0 | - | - |
| Bury | 628 | 91.9 | 666 | 97.5 | 9 | 1.3 | 6 | 0.9 | 0 | 0.0 | - | - |
| Cheshire | 1676 | 95.8 | 1727 | 98.7 | 7 | 0.4 | 14 | 0.8 | 0 | 0.0 | - | - |
| Cumbria | 1174 | 96.2 | 1189 | 97.5 | 11 | 0.9 | 9 | 0.7 | 11 | 0.9 | 0 | 0.0 |
| Halton | 659 | 88.1 | 680 | 90.9 | 52 | 7.0 | 6 | 0.8 | 0 | 0.0 | 10 | 1.3 |
| Knowsley | 888 | 98.9 | 897 | 99.9 | - | - | 0 | 0.0 | 0 | 0.0 | 0 | 0.0 |
| Lancashire | 3210 | 89.8 | 3377 | 94.5 | 127 | 3.6 | 68 | 1.9 | 0 | 0.0 | - | - |
| Liverpool | 2720 | 94.7 | 2802 | 97.6 | 29 | 1.0 | 37 | 1.3 | - | - | - | - |
| Manchester | 2832 | 94.7 | 2926 | 97.8 | 21 | 0.7 | 40 | 1.3 | 0 | 0.0 | 5 | 0.2 |
| Oldham | 765 | 95.1 | 788 | 98.0 | 10 | 1.2 | 6 | 0.7 | 0 | 0.0 | 0 | 0.0 |
| Rochdale | 1139 | 92.8 | 1198 | 97.6 | 16 | 1.3 | 12 | 1.0 | 0 | 0.0 | - | - |
| Salford | 761 | 91.0 | 793 | 94.9 | 13 | 1.6 | 30 | 3.6 | 0 | 0.0 | 0 | 0.0 |
| Sefton | 1021 | 94.8 | 1045 | 97.0 | 23 | 2.1 | 9 | 0.8 | 0 | 0.0 | 0 | 0.0 |
| St Helens | 777 | 97.0 | 787 | 98.3 | 6 | 0.7 | 8 | 1.0 | 0 | 0.0 | 0 | 0.0 |
| Stockport | 619 | 92.9 | 649 | 97.4 | 13 | 2.0 | - | - | 0 | 0.0 | 0 | 0.0 |
| Tameside | 745 | 93.5 | 774 | 97.1 | - | - | 19 | 2.4 | - | - | 0 | 0.0 |
| Trafford | 457 | 88.7 | 491 | 95.3 | 17 | 3.3 | 7 | 1.4 | 0 | 0.0 | 0 | 0.0 |
| Warrington | 727 | 95.0 | 754 | 98.6 | - | - | 8 | 1.0 | 0 | 0.0 | 0 | 0.0 |
| Wigan and Leigh | 1084 | 90.9 | 1161 | 97.4 | 6 | 0.5 | 25 | 2.1 | 0 | 0.0 | 0 | 0.0 |
| Wirral | 2300 | 97.3 | 2347 | 99.3 | 7 | 0.3 | 10 | 0.4 | 0 | 0.0 | 0 | 0.0 |

- = Numbers less than 5 have been suppressed to protect the confidentiality of individuals

Breakdown of successful completions for individuals in contact with treatment services

Figure Three illustrates the breakdown of successful completions for those concluding treatment regionally (n=416) and Table Seven details the number of successful completions according to D(A)AT of residence. A successful completion is defined as a person being discharged from treatment having completed the treatment or completed drug free or being referred on to another treatment service.

Figure Three: Regional breakdown of successful completions for latest episode of treatment for year to date.

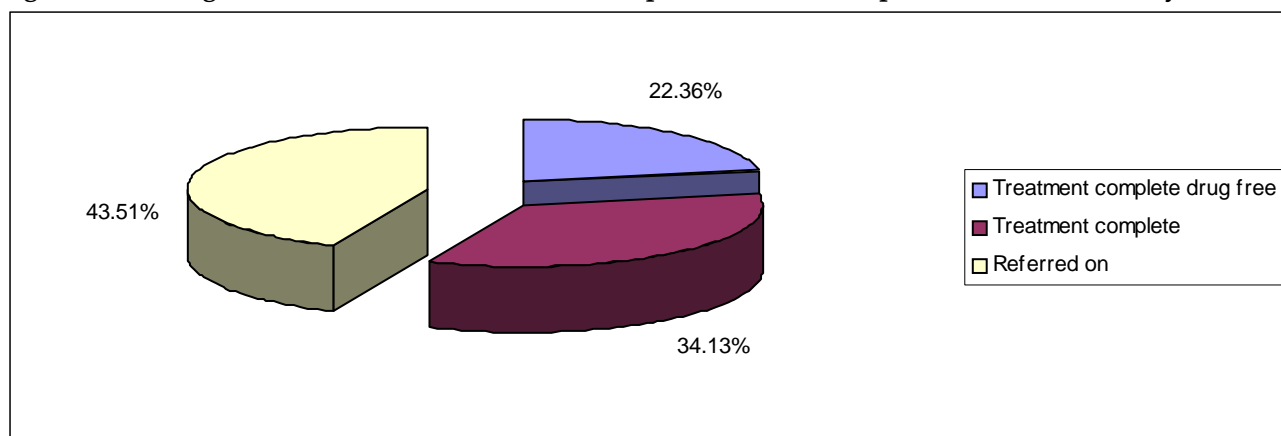


Table Seven: Breakdown of successful treatment completions for latest episode of treatment by D(A)AT of residence for the year to date.

| D(A)AT | Treatment Complete Drug Free | Treatment Completed | Referred on |
|-----------------------|------------------------------|---------------------|-------------|
| Blackburn with Darwen | - | 5 | 7 |
| Blackpool | 5 | 5 | 13 |
| Bolton | 8 | 6 | 8 |
| Bury | - | - | - |
| Cheshire | - | - | - |
| Cumbria | - | 7 | - |
| Halton | 5 | 35 | 12 |
| Knowsley | 0 | - | 0 |
| Lancashire | 13 | 17 | 97 |
| Liverpool | 19 | 5 | 5 |
| Manchester | 5 | 8 | 8 |
| Oldham | 8 | - | 0 |
| Rochdale | - | 11 | - |
| Salford | - | - | 9 |
| Sefton | - | 7 | 15 |
| St Helens | - | - | - |
| Stockport | - | 12 | 0 |
| Tameside | - | - | 0 |
| Trafford | 6 | 5 | 6 |
| Warrington | - | 0 | 0 |
| Wigan and Leigh | 0 | 5 | - |
| Wirral | - | - | - |

- = Numbers less than 5 have been suppressed to protect the confidentiality of individuals

Primary drug of use of individuals in contact with treatment services

This section details the primary drug of use of those in contact with treatment services in the North West of England. Whilst regionally 69.00% of individuals reported heroin as their primary drug of use, this proportion varied between D(A)ATs from 83.23% in Blackpool to 43.18% in Halton.

Figure Four: Regional primary drug of use.

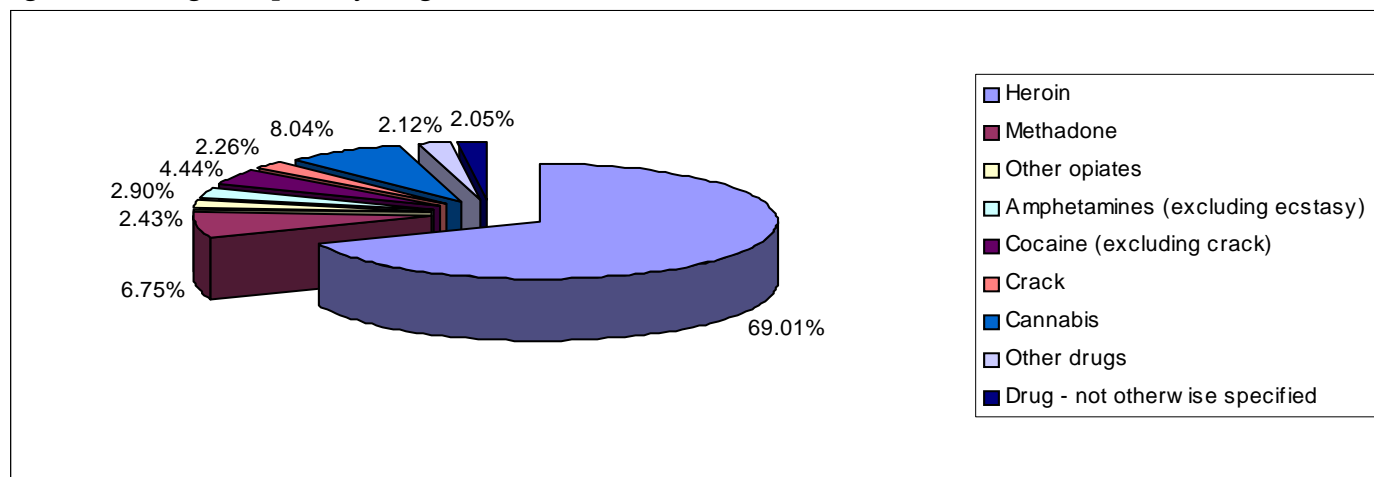


Table Eight: Primary drug of use by D(A)AT of residence

| D(A)AT | Heroin | Methadone | Other Opiates | Amphetamines (excluding ecstasy) | Cocaine (excluding crack) | Crack | Cannabis | Other Drugs | Drug - not otherwise specified | Total |
|-----------------------|--------|-----------|---------------|----------------------------------|---------------------------|-------|----------|-------------|--------------------------------|-------|
| Blackburn with Darwen | 531 | 30 | 22 | 33 | 7 | 12 | 67 | 10 | 22 | 531 |
| Blackpool | 903 | 64 | 16 | 30 | 16 | 11 | 23 | 22 | 0 | 903 |
| Bolton | 955 | 79 | 42 | 45 | 38 | 27 | 74 | 33 | 5 | 955 |
| Bury | 444 | 11 | 9 | 21 | 40 | 22 | 109 | 22 | 5 | 444 |
| Cheshire | 1197 | 242 | 43 | 33 | 38 | 36 | 99 | 25 | 36 | 1197 |
| Cumbria | 889 | 96 | 71 | 49 | 17 | - | 53 | 38 | - | 889 |
| Halton | 323 | 52 | 12 | 31 | 77 | 35 | 148 | 70 | 0 | 323 |
| Knowsley | 515 | 31 | 8 | 13 | 108 | 20 | 169 | 22 | 12 | 515 |
| Lancashire | 2497 | 184 | 65 | 144 | 76 | 56 | 259 | 104 | 189 | 2497 |
| Liverpool | 1920 | 242 | 83 | 20 | 159 | 62 | 197 | 25 | 163 | 1920 |
| Manchester | 2376 | 147 | 45 | 65 | 66 | 119 | 97 | 28 | 49 | 2376 |
| Oldham | 621 | 33 | 18 | 24 | 32 | 19 | 42 | 14 | - | 621 |
| Rochdale | 708 | 99 | 11 | 53 | 47 | 35 | 200 | 47 | 27 | 708 |
| Salford | 565 | 83 | 31 | 27 | 20 | 13 | 77 | 19 | - | 565 |
| Sefton | 832 | 43 | 16 | 5 | 63 | 11 | 59 | 6 | 42 | 832 |
| St Helens | 533 | 63 | 12 | 14 | 72 | 15 | 72 | 14 | 6 | 533 |
| Stockport | 344 | 107 | 32 | 40 | 34 | 19 | 63 | 11 | 16 | 344 |
| Tameside | 572 | 70 | 29 | 25 | 24 | 12 | 41 | 12 | 12 | 572 |
| Trafford | 289 | 71 | 14 | 15 | 55 | 17 | 47 | 6 | - | 289 |
| Warrington | 429 | 77 | 23 | 12 | 69 | 18 | 114 | 20 | - | 429 |
| Wigan and Leigh | 818 | 54 | 15 | 80 | 68 | 17 | 112 | 25 | - | 818 |
| Wirral | 1713 | 61 | 89 | 54 | 144 | 85 | 170 | 35 | 13 | 1713 |

- = Numbers less than 5 have been suppressed to protect the confidentiality of individuals

'Other Drugs' includes benzodiazepines, hallucinogens, ecstasy, solvents, barbiturates, major tranquillisers, anti-depressants, prescription drugs other drugs and polydrug use.

Table Nine: Breakdown of primary drug of use by age and D(A)AT of residence

| D(A)AT | Heroin | | Methadone | | Other Opiates | | Amphetamines (excluding ecstasy) | | Cocaine (excluding crack) | | Crack | | Cannabis | | Other Drugs | | Drug - not otherwise specified | | Total | |
|-----------------------|--------|------|-----------|-----|---------------|-----|----------------------------------|-----|---------------------------|-----|-------|-----|----------|-----|-------------|-----|--------------------------------|-----|-------|------|
| | <18 | 18+ | <18 | 18+ | <18 | 18+ | <18 | 18+ | <18 | 18+ | <18 | 18+ | <18 | 18+ | <18 | 18+ | <18 | 18+ | <18 | 18+ |
| Blackburn with Darwen | 0 | 531 | - | 29 | 0 | 22 | - | 31 | - | 5 | 0 | 12 | 42 | 25 | 0 | 10 | 0 | 22 | 47 | 687 |
| Blackpool | - | 901 | 0 | 64 | 0 | 16 | - | 28 | 0 | 16 | 0 | 11 | 11 | 12 | 10 | 12 | 0 | 0 | 25 | 1060 |
| Bolton | 5 | 950 | - | 78 | 0 | 42 | - | 42 | - | 36 | - | 23 | 26 | 48 | 6 | 27 | 0 | 5 | 47 | 1251 |
| Bury | 0 | 444 | 0 | 11 | 0 | 9 | - | 20 | 7 | 33 | - | 21 | 58 | 51 | 8 | 14 | - | - | 77 | 606 |
| Cheshire | - | 1193 | 0 | 242 | 0 | 43 | - | 30 | - | 37 | 0 | 36 | 53 | 46 | - | 23 | - | 33 | 66 | 1683 |
| Cumbria | - | 886 | 0 | 96 | 0 | 71 | - | 48 | 0 | 17 | 0 | - | 14 | 39 | - | 34 | 0 | - | 22 | 1198 |
| Halton | 0 | 323 | 0 | 52 | 0 | 12 | - | 30 | - | 76 | 0 | 35 | 25 | 123 | 0 | 70 | 0 | 0 | 27 | 721 |
| Knowsley | 0 | 515 | 0 | 31 | 0 | 8 | 0 | 13 | - | 105 | - | 19 | 70 | 99 | - | 19 | 0 | 12 | 77 | 821 |
| Lancashire | - | 2494 | 0 | 184 | 0 | 65 | 13 | 131 | 7 | 69 | 0 | 56 | 144 | 115 | 20 | 84 | 0 | 189 | 187 | 3387 |
| Liverpool | 0 | 1920 | 0 | 242 | 0 | 83 | 0 | 20 | - | 156 | 0 | 62 | 84 | 113 | - | 23 | 8 | 155 | 97 | 2774 |
| Manchester | 0 | 2376 | 0 | 147 | 0 | 45 | 0 | 65 | 14 | 52 | - | 118 | 38 | 59 | - | 26 | 0 | 49 | 55 | 2937 |
| Oldham | 0 | 621 | 0 | 33 | 0 | 18 | 0 | 24 | 0 | 32 | 0 | 19 | 18 | 24 | - | 12 | - | 0 | 21 | 783 |
| Rochdale | 0 | 708 | 0 | 99 | 0 | 11 | - | 50 | 12 | 35 | 0 | 35 | 115 | 85 | 14 | 33 | - | 26 | 145 | 1082 |
| Salford | - | 564 | 0 | 83 | 0 | 31 | 0 | 27 | - | 19 | 0 | 13 | 22 | 55 | - | 16 | 0 | - | 27 | 809 |
| Sefton | 0 | 832 | 0 | 43 | 0 | 16 | 0 | 5 | - | 62 | 0 | 11 | 16 | 43 | - | 5 | 0 | 42 | 18 | 1059 |
| St Helens | 0 | 533 | 0 | 63 | 0 | 12 | - | 13 | - | 71 | 0 | 15 | 23 | 49 | - | 11 | 0 | 6 | 28 | 773 |
| Stockport | - | 343 | 0 | 107 | 0 | 32 | 0 | 40 | - | 30 | 0 | 19 | 19 | 44 | 0 | 11 | 8 | 8 | 32 | 634 |
| Tameside | 0 | 572 | 0 | 70 | 0 | 29 | - | 24 | 0 | 24 | 0 | 12 | 9 | 32 | - | 8 | 0 | 12 | 14 | 783 |
| Trafford | 0 | 289 | 0 | 71 | 0 | 14 | - | 14 | - | 54 | 0 | 17 | 22 | 25 | 0 | 6 | 0 | - | 24 | 491 |
| Warrington | 0 | 429 | 0 | 77 | - | 22 | 0 | 12 | - | 65 | 0 | 18 | 28 | 86 | - | 16 | - | - | 39 | 726 |
| Wigan and Leigh | - | 817 | 0 | 54 | 0 | 15 | - | 79 | 8 | 60 | 0 | 17 | 49 | 63 | 8 | 17 | 0 | - | 67 | 1125 |
| Wirral | - | 1711 | 0 | 61 | 0 | 89 | 0 | 54 | 10 | 134 | 0 | 85 | 39 | 131 | 7 | 28 | 0 | 13 | 58 | 2306 |

- = Numbers less than 5 have been suppressed to protect the confidentiality of individuals

'Other Drugs' includes benzodiazepines, hallucinogens, ecstasy, solvents, barbiturates, major tranquillisers, anti-depressants, other drugs and polydrug use.

'Other' referral sources include:

- A&E
- Syringe exchange
- Psychiatry
- Community Care Assessment
- Employment service
- Education service
- Pupil Referral Unit (PRU)
- Connexions
- Social services
- Looked After Children (LAC)
- Sex worker project
- General hospital
- Psychological services
- Relative
- Concerned other
- Child and Adolescent Mental Health Service (CAMHS)
- Other

North West NDTMS Regional Team

The NDTMS is operated in the North West by a regional team based in the North West Public Health Observatory. This is housed within the Centre for Public Health at Liverpool John Moores University. The regional team collects data from all of the North West structured drug treatment providers. This is then provided to the National Treatment Agency (NTA) and monthly figures are produced for each D(A)AT.

Contact details

Claire Shaw

**Centre for Public Health
Faculty of Health and Applied Social Sciences
Liverpool John Moores University
Castle House
North Street
Liverpool
L3 2AY
Tel (0151) 231 4380
Fax (0151) 231 4515**