



HIV & AIDS

In Cumbria and Lancashire **2014**

HIV & AIDS in Cumbria and Lancashire, 2014

- In 2014, **1,156** HIV positive Cumbria and Lancashire residents accessed treatment and care from statutory treatment centres in Cumbria, Lancashire, Greater Manchester and Liverpool
- The number of people living with HIV in Cumbria and Lancashire has **increased by 5%** since 2013
- **Sex between men** (MSM) continues to be the predominant mode of exposure (**60%**) for all Cumbria and Lancashire residents
- Those from **BME groups** made up **16%** of HIV positive residents accessing treatment and care

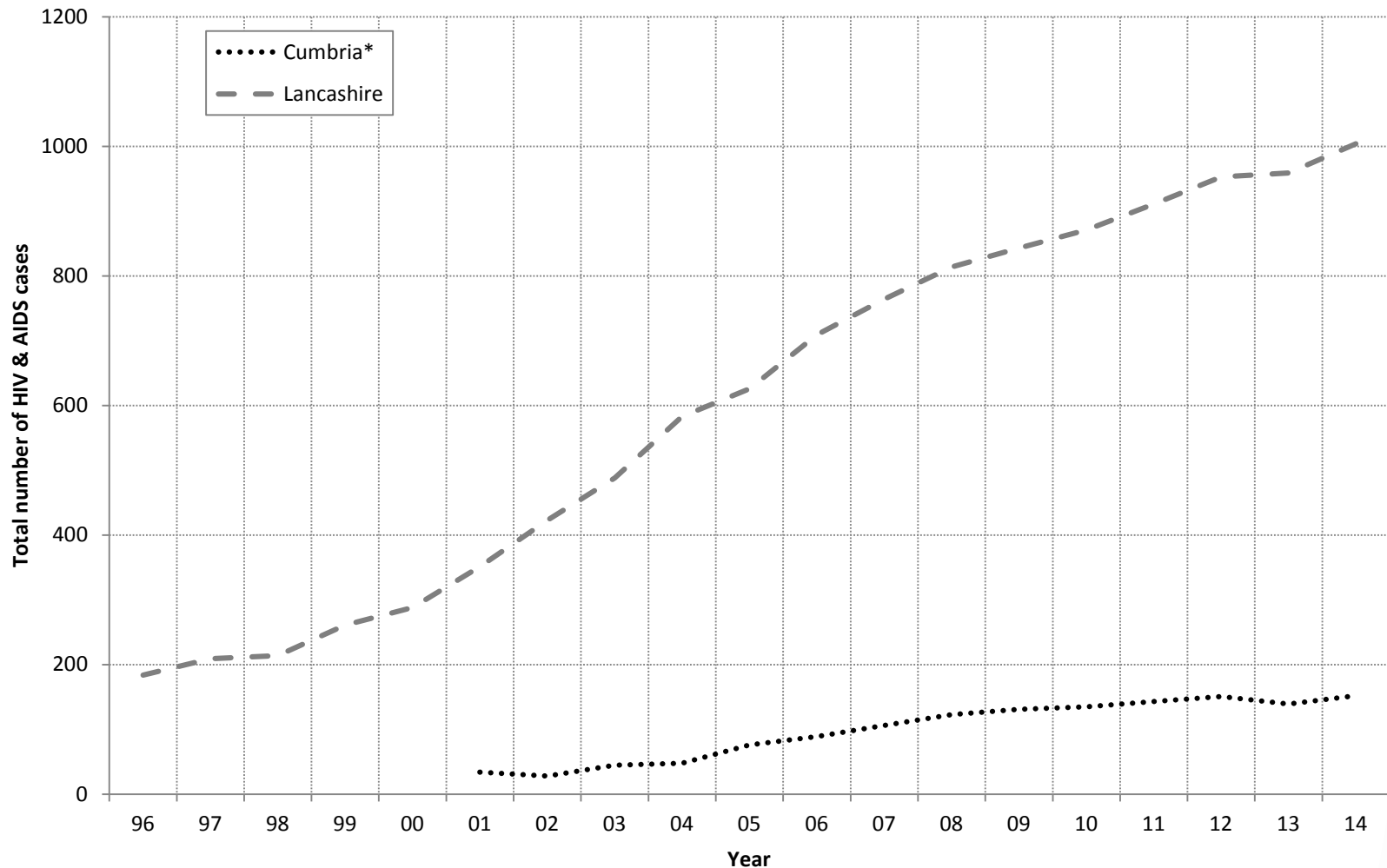


New HIV cases, Cumbria and Lancashire, 2014

- There were **116 new cases** of HIV reported among Cumbria and Lancashire residents in 2014
- New cases represented **10%** of those accessing treatment and care in 2014
- The dominant mode of exposure (**59%**) for new cases is **sex between men** (MSM)
- The largest proportion of new cases whose stage was known were **asymptomatic (61%)**. However one of two deaths among new cases was due to an AIDS-related illness and 13% of new cases were diagnosed with AIDS by the end of 2014



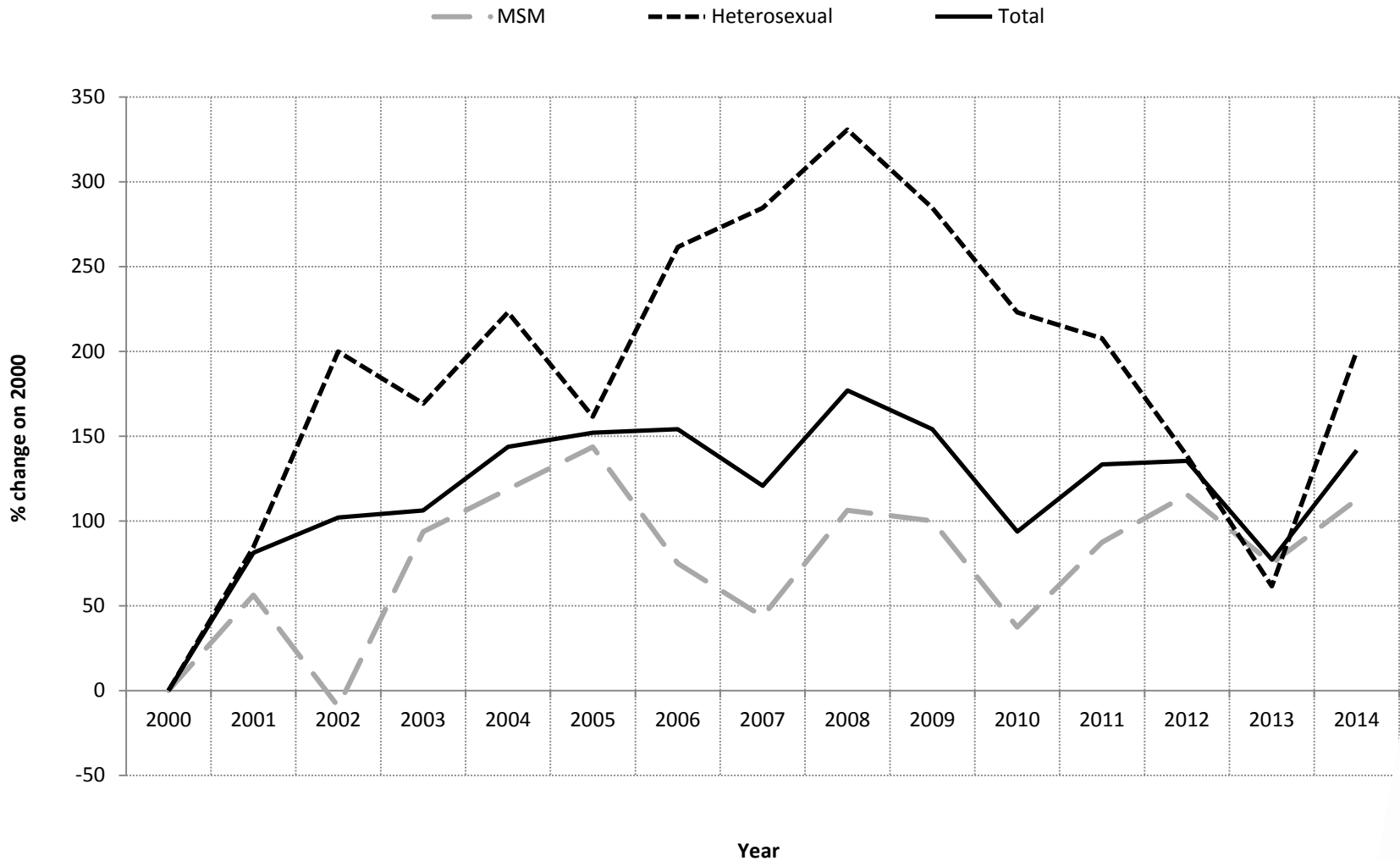
Total number of HIV & AIDS cases seen in statutory treatment centres in Cumbria and Lancashire, 1996-2014



* Prior to 2001, area of residence was by health authority and did not include Cumbria



Percentage change in **new cases of HIV** by selected infection route of HIV, Cumbria and Lancashire, **2000-2014**





Data produced by:
Centre for Public Health
Liverpool John Moores University
Email: Sexualhealth@ljmu.ac.uk
Telephone: +44 (151) 231 4542
<http://www.cph.org.uk/hiv/>

 @cphsexualhealth