



HIV & AIDS

In Greater Manchester **2014**

HIV & AIDS in Greater Manchester, 2014

- In 2014, **4,922** HIV positive Greater Manchester residents accessed treatment and care from statutory treatment centres in Cumbria, Lancashire, Greater Manchester and Liverpool
- The number of people living with HIV in Greater Manchester has **increased by 5%** since 2013
- **Sex between men** (MSM) continues to be the predominant mode of exposure (**52%**) for all Greater Manchester residents
- Those from **BME groups** made up **40%** of HIV positive residents accessing treatment and care
- **Non-UK nationals** accounted for **15%** of all cases. Nearly two fifths of non-UK nationals were classed as asylum seekers (38%) and over three fifths (63%) were female

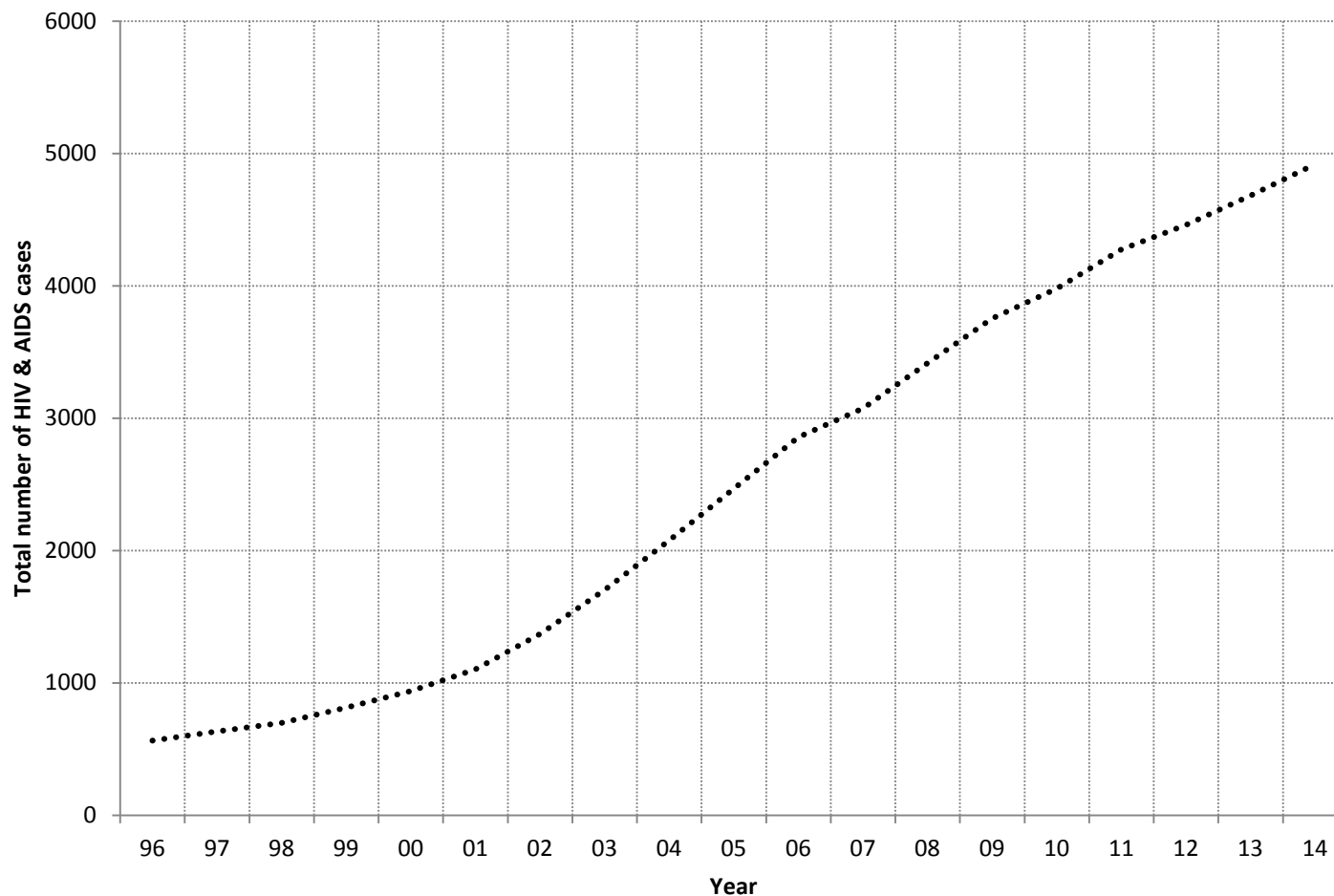


New HIV cases, Greater Manchester, 2014

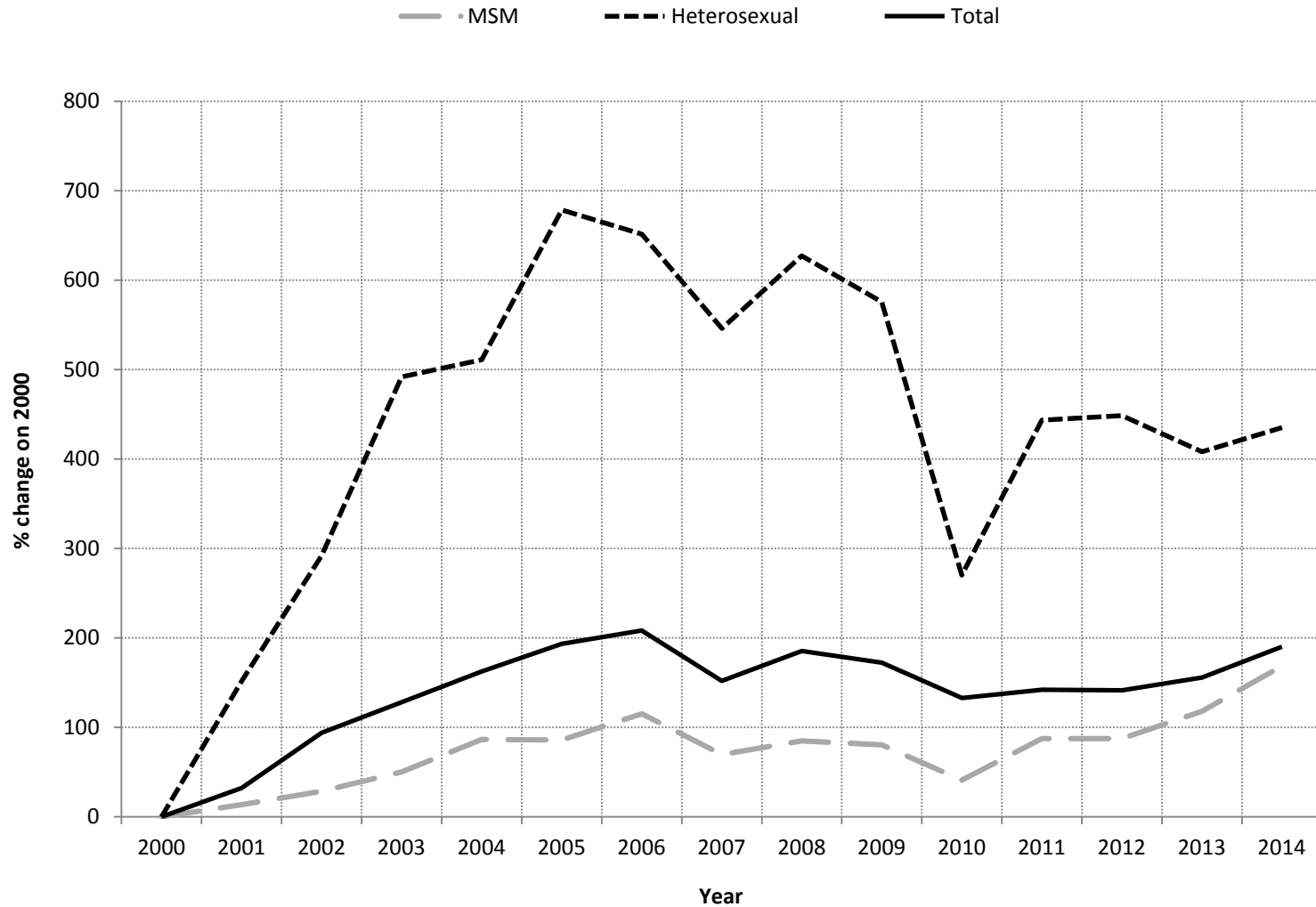
- There were **531 new cases** of HIV reported among Greater Manchester residents in 2014
- New cases represented **11%** of those accessing treatment and care in 2014
- The dominant mode of exposure (**57%**) for new cases is **sex between men** (MSM)
- The largest proportion of new cases whose stage was known were **asymptomatic (41%)**. However three of four deaths among new cases was due to an AIDS-related illness and 23% of new cases were diagnosed with AIDS by the end of 2014



Total number of HIV & AIDS cases seen in statutory treatment centres in Greater Manchester, 1996-2014



Percentage change in **new cases of HIV** by selected infection route of HIV, Greater Manchester, **2000-2014**





Data produced by:
Centre for Public Health
Liverpool John Moores University
Email: Sexualhealth@ljmu.ac.uk
Telephone: +44 (151) 231 4542
<http://www.cph.org.uk/hiv/>

 @cphsexualhealth